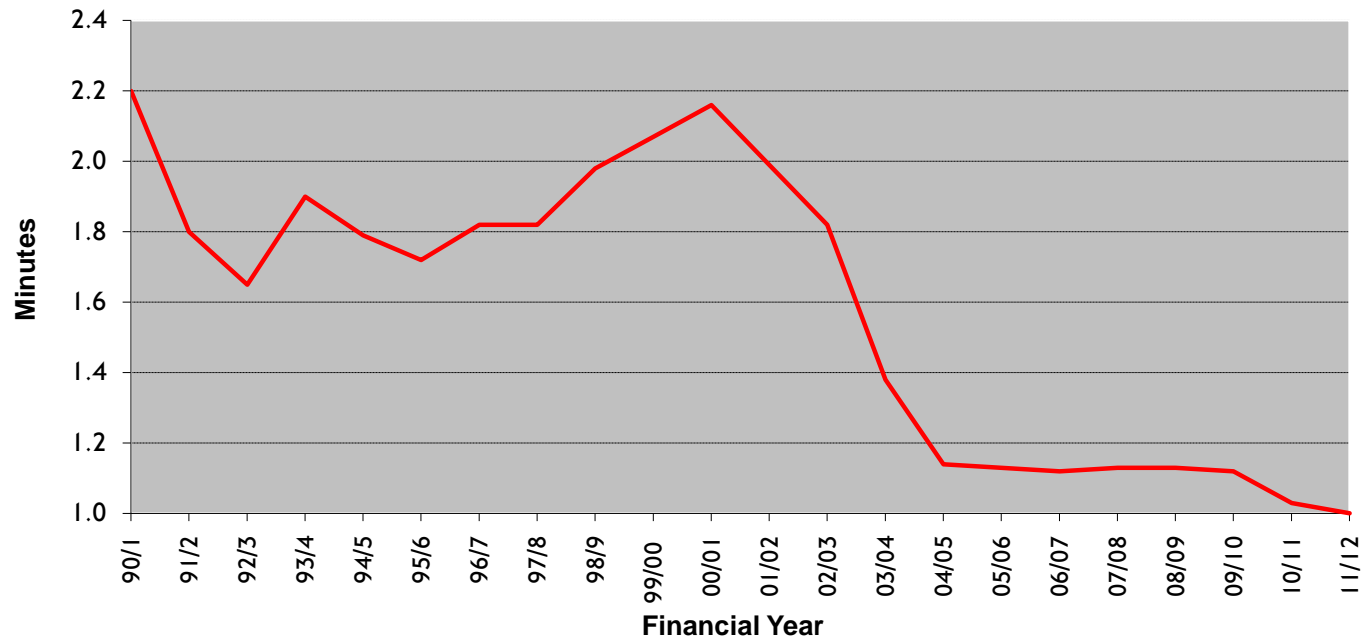
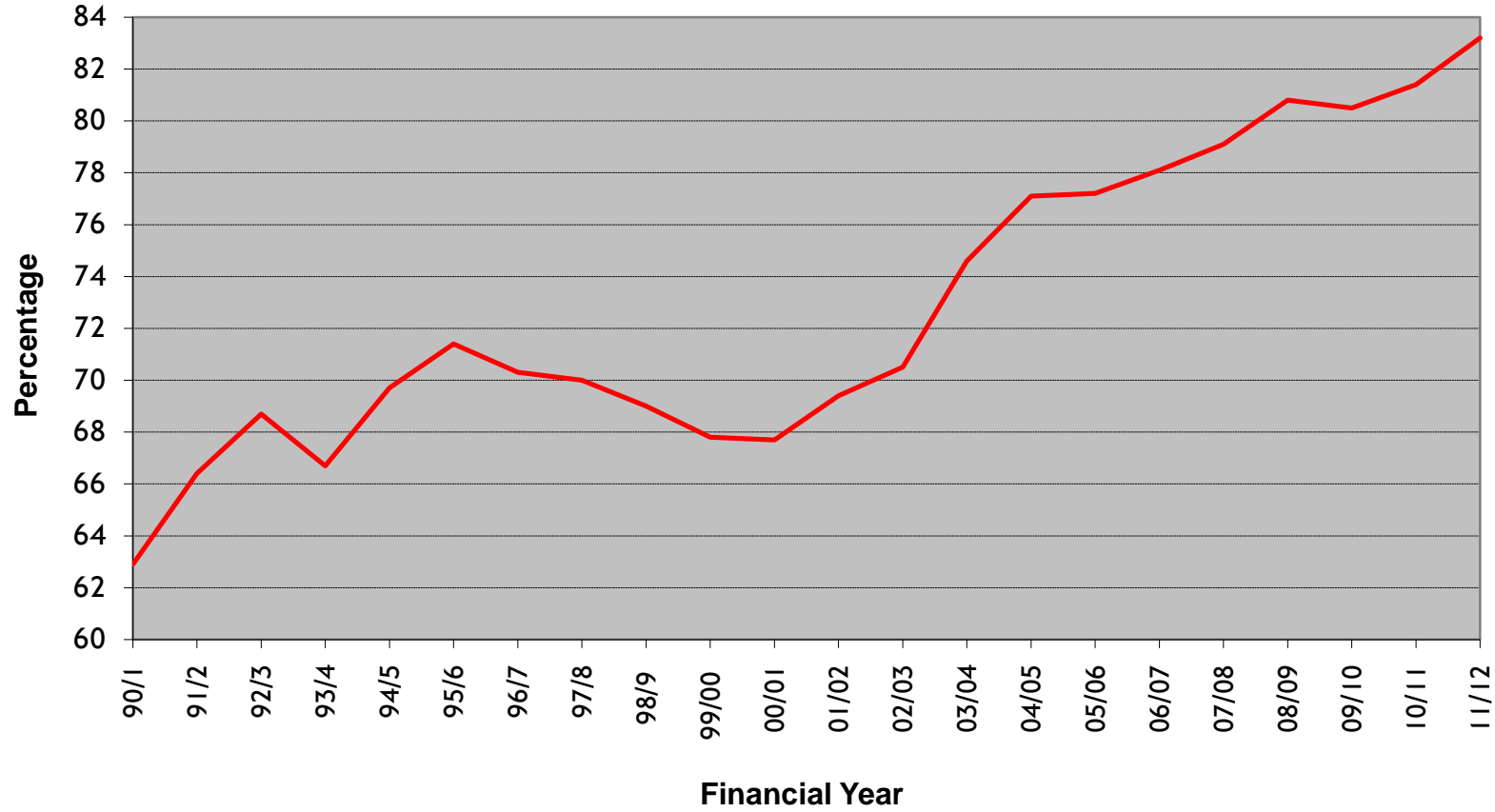


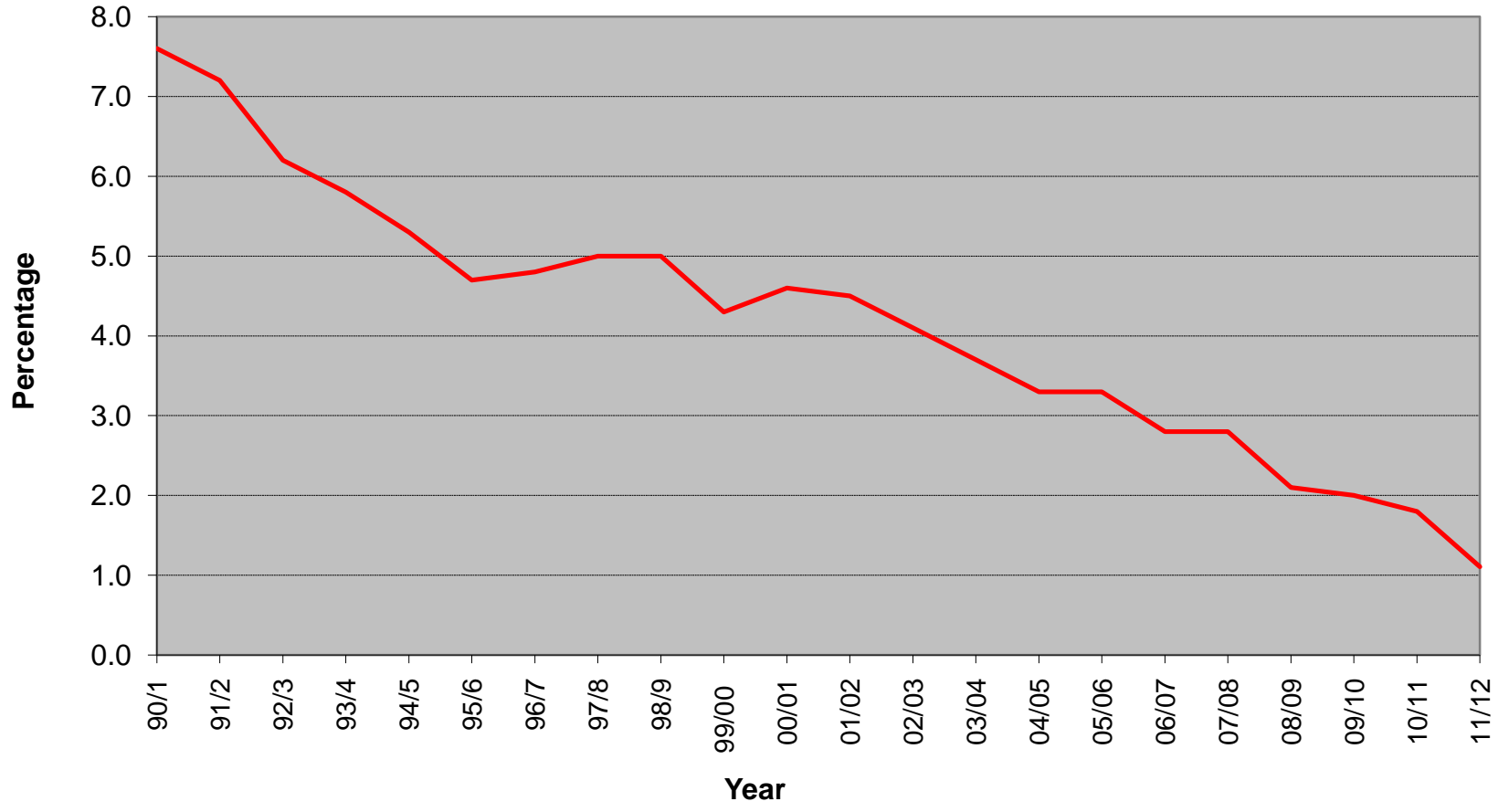
EXCESS WAITING TIME FOR HIGH FREQUENCY BUS SERVICES



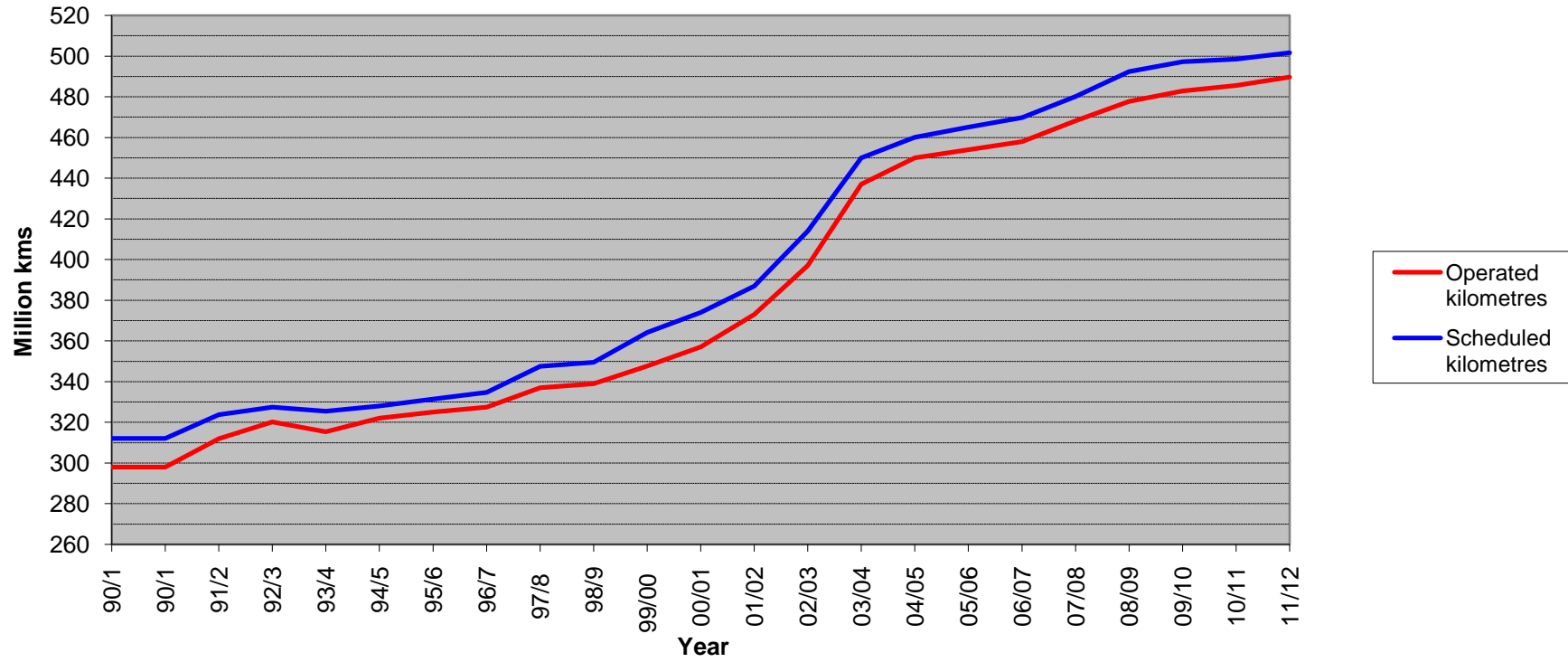
LOW FREQUENCY BUS SERVICES PERCENTAGE "ON-TIME"



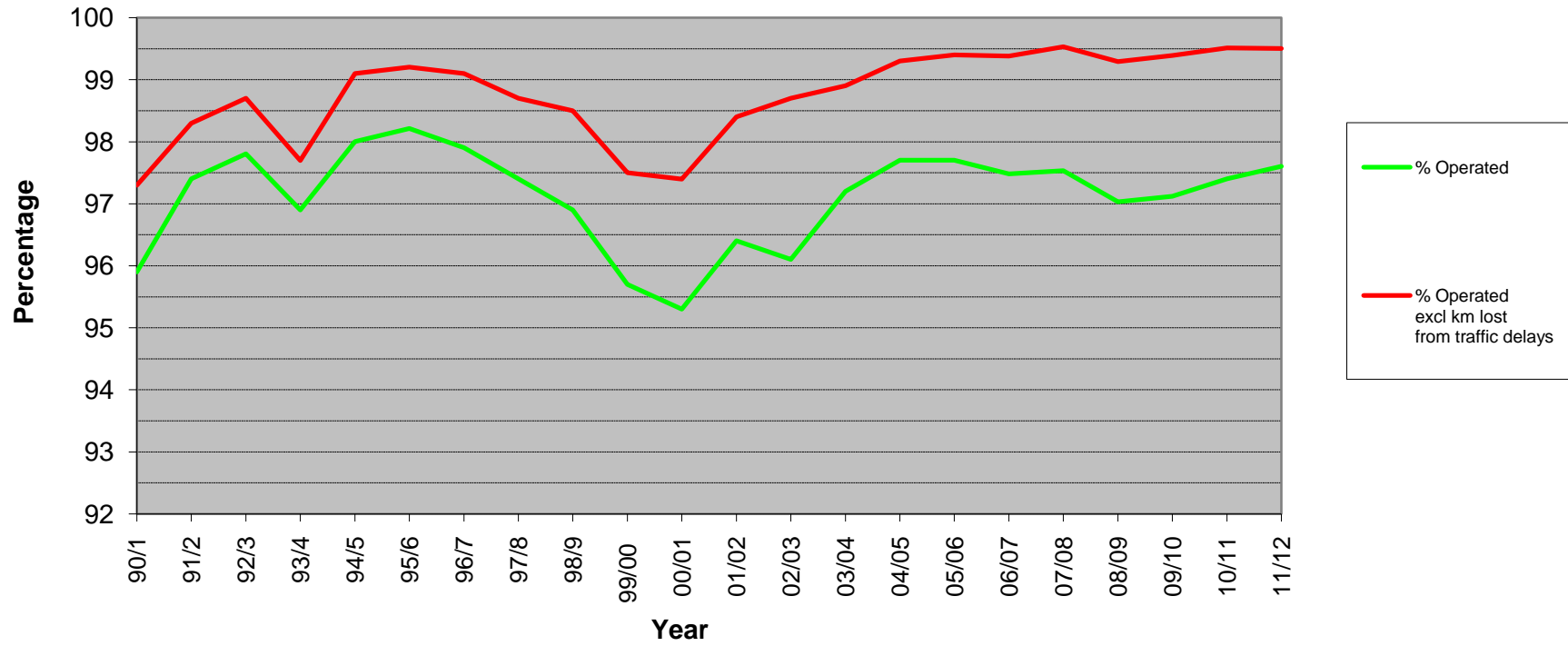
LOW FREQUENCY BUS SERVICES PERCENTAGE RUNNING "EARLY"



KILOMETRES OPERATED



PROPORTION OF SCHEDULED KILOMETRES OPERATED



LOST KILOMETRES BY CAUSE

